

3. Disassembly and Reassembly

3-1 Cabinet and PCB

3-1-1 Cabinet Top Removal

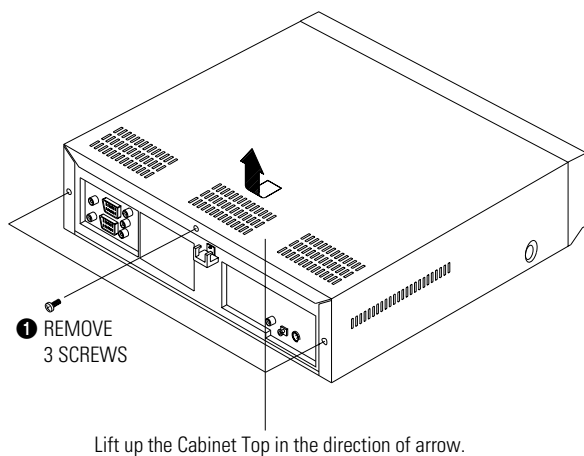


Fig. 3-1 Cabinet Top Removal

3-1-2 Bottom Cover Removal

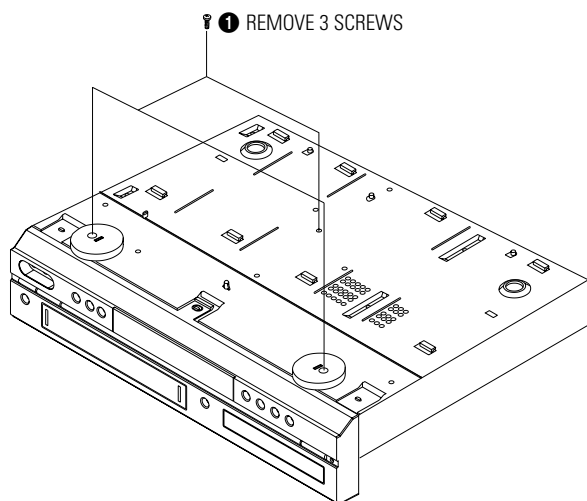


Fig. 3-2 Bottom Cover Removal

3-1-3 Ass'y Front Panel Removal

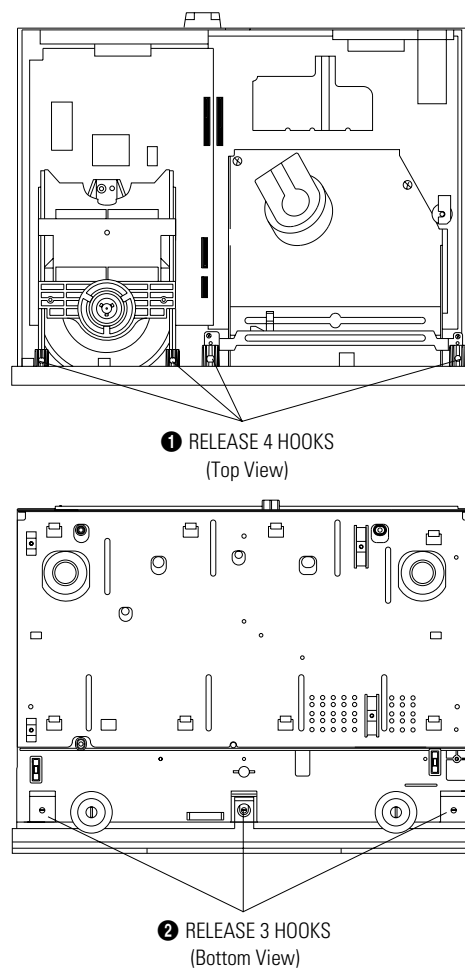


Fig. 3-3 Ass'y Front Panel Removal

3-1-4 Function-Timer PCB Removal

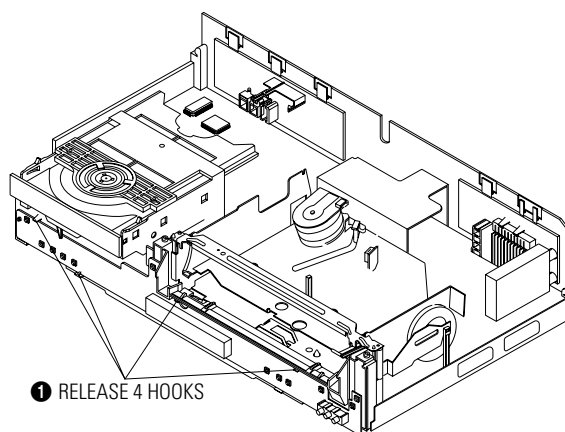


Fig. 3-4 Function-Timer PCB Removal

3-1-5 Chassis Removal

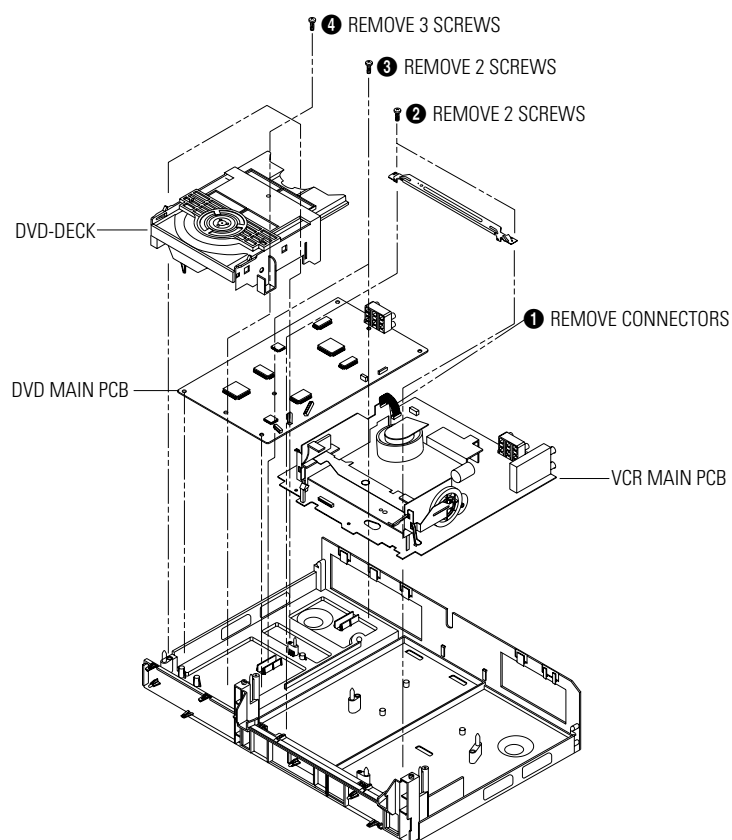


Fig. 3-5 Chassis Removal

3-1-6 VCR Main PCB Removal

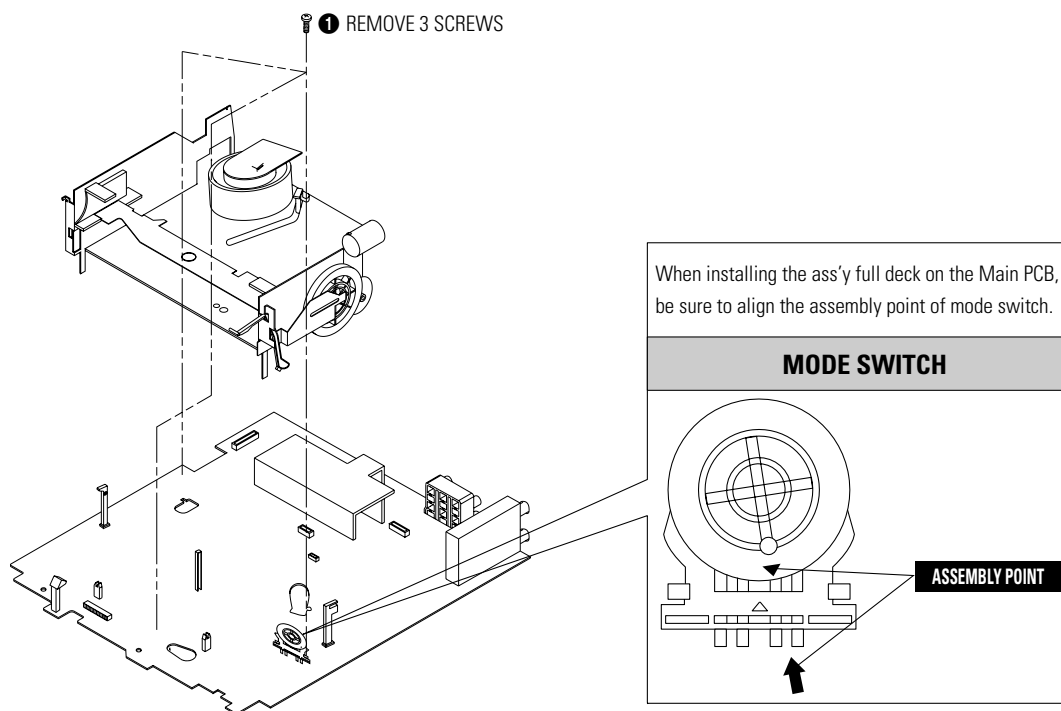


Fig. 3-6 VCR Main PCB Removal

3-2 Circuit Board Locations

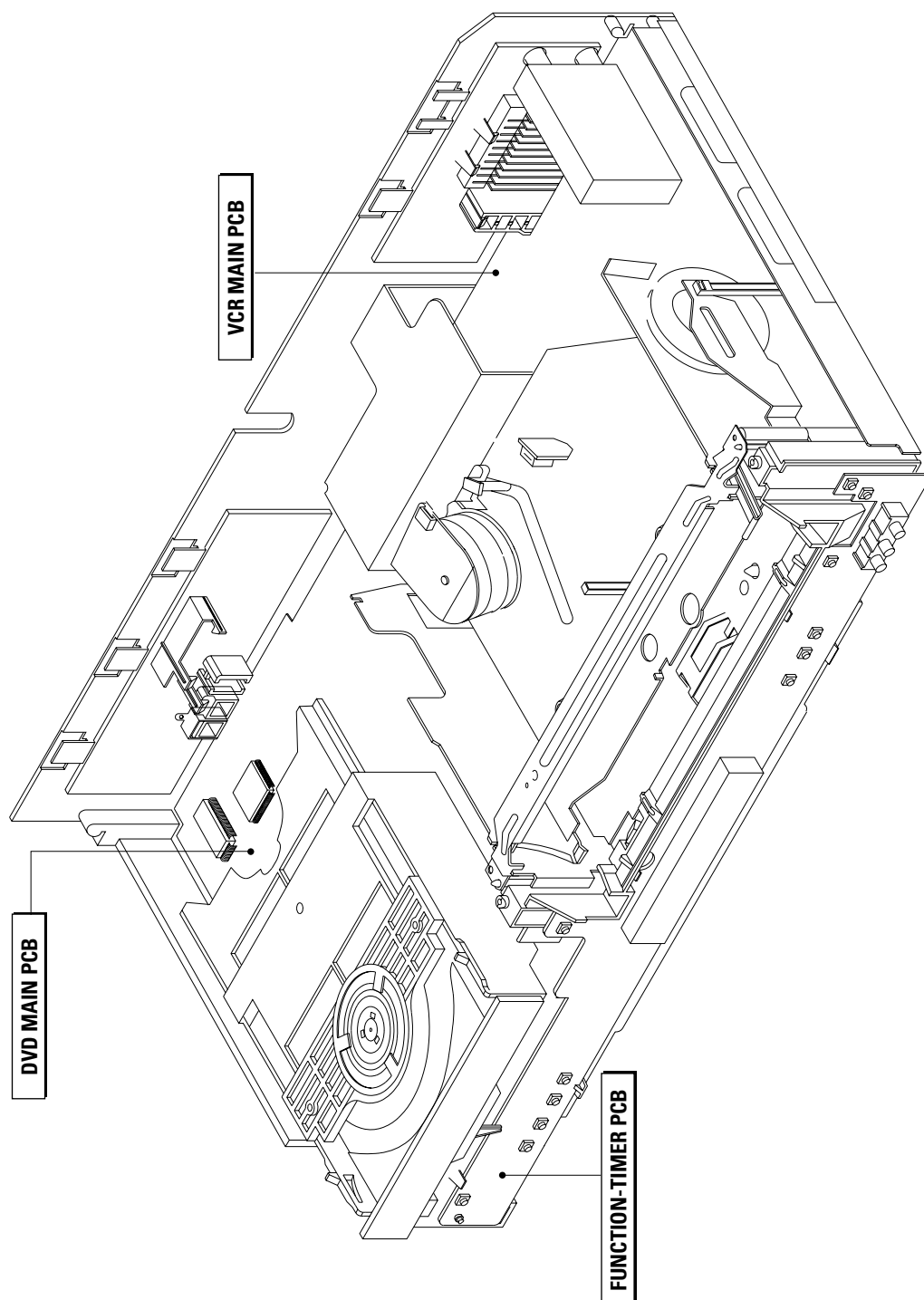


Fig. 3-7 Circuit Board Locations

3-3 DVD Deck

3-3-1 Tray Disc Removal

- 1) Insert a Screw Driver ❶ into Emergency Hole ❷ and push the Slider Housing ❸ in the direction arrow "A".
- 2) When the Tray Disc ❹ comes out a little, pull it in the direction arrow "B" by hand.
- 3) Pull the Tray Disc ❹ to disassemble , while simultaneously pushing 2 Stoppers ❺ (left, right) in the direction arrow "C", "D".

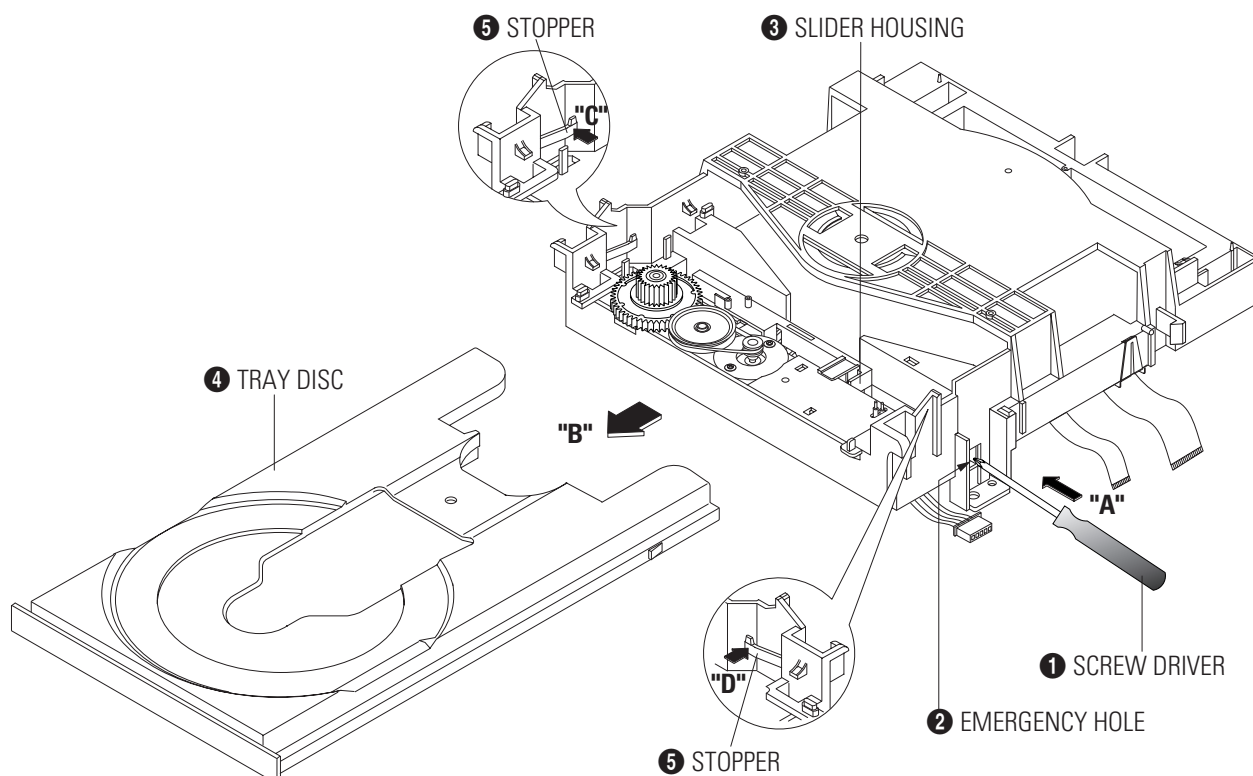


Fig. 3-8 Tray Disc Removal

3-3-2 Assy P/U Deck Removal

- 1) Disconnect DCN2 ❶, DCN3 ❷.
- 2) Lift down the Ass'y P/U Deck ❸ while simultaneously pushing 2 Hooks ❹, ❺ in the direction of arrow "A", "B".

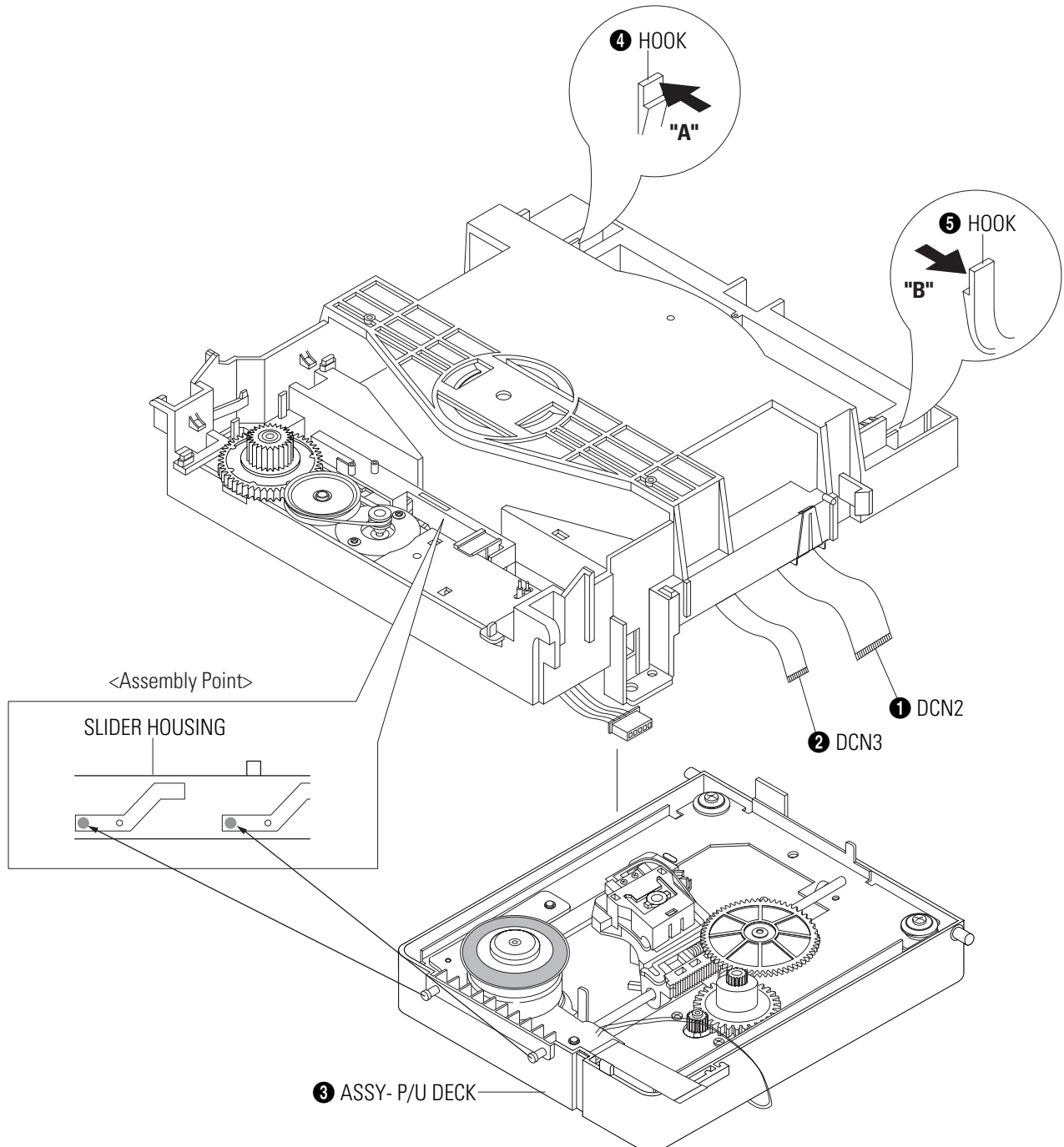


Fig. 3-9 Assy P/U Deck Removal

3-3-3 Housing Ass'y Removal

- 1) Remove Belt ❶.
- 2) Push the Hook ❷ in the direction arrow "A" and lift up Pulley Gear ❸.
- 3) Push the Slider Housing ❺ in the direction arrow "B" and lift up the Gear Tray ❹.
- 4) Lift up the Slider Housing ❺.
- 5) Remove the soldering ❻ of 2 points (Red, Black).
- 6) Remove 2 Screws ❼ and lift down the Motor Load Ass'y ❽.
- 7) Push the 3 Hooks ❾ bottom side in the direction arrow "C" and lift up the Housing PCB ❿.
- 8) Push the Hooks ⓫ and remove Deck PCB ⓬.

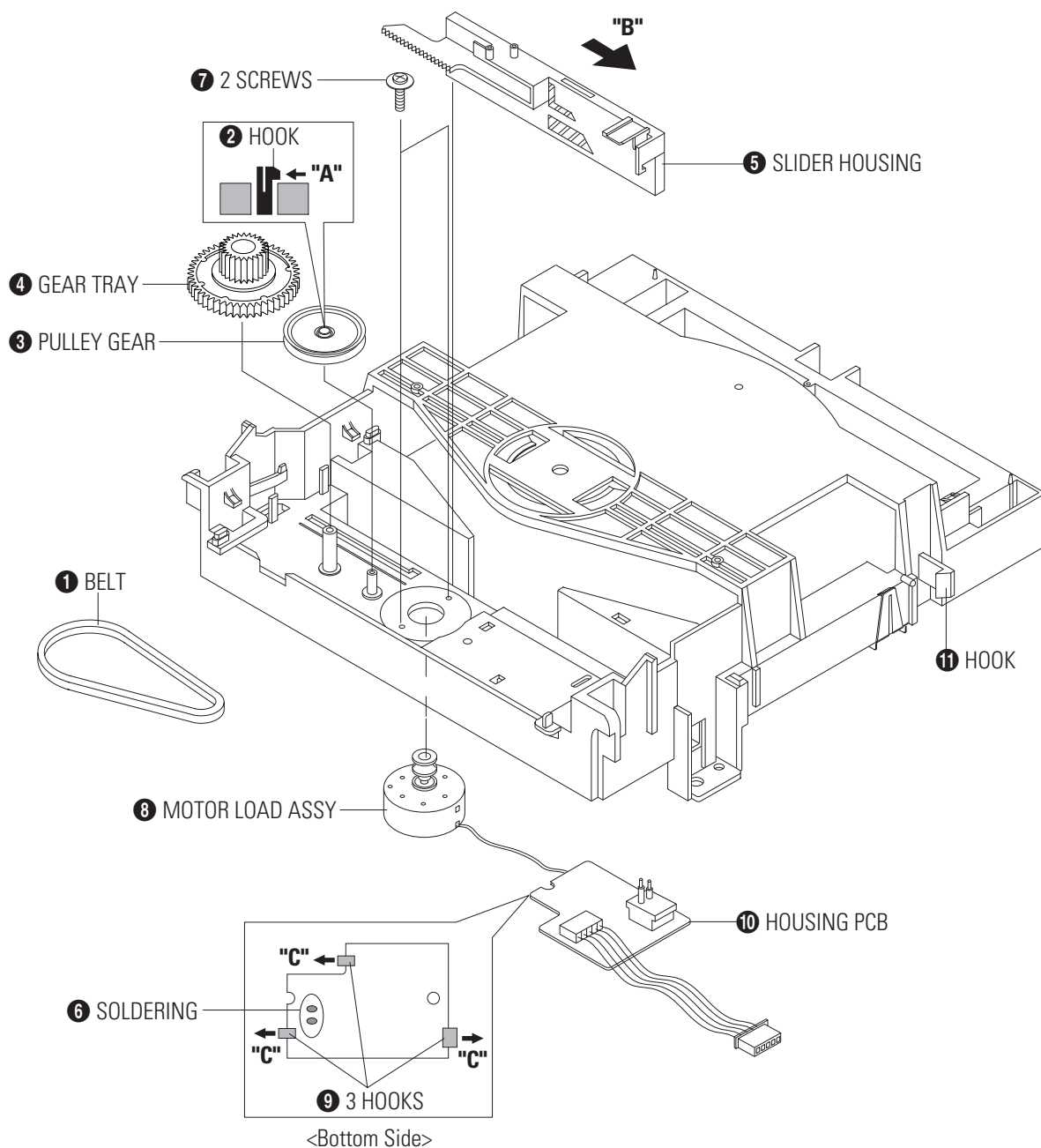


Fig. 3-10 Housing Ass'y Removal

3-3-4 Sub Chassis Removal

- 1) Remove the Soldering of Motor Feed (+, - wire) ❶.
- 2) Remove the 4 Screws ❷.
- 3) Lift up the Ass'y Brkt Deck ❸.

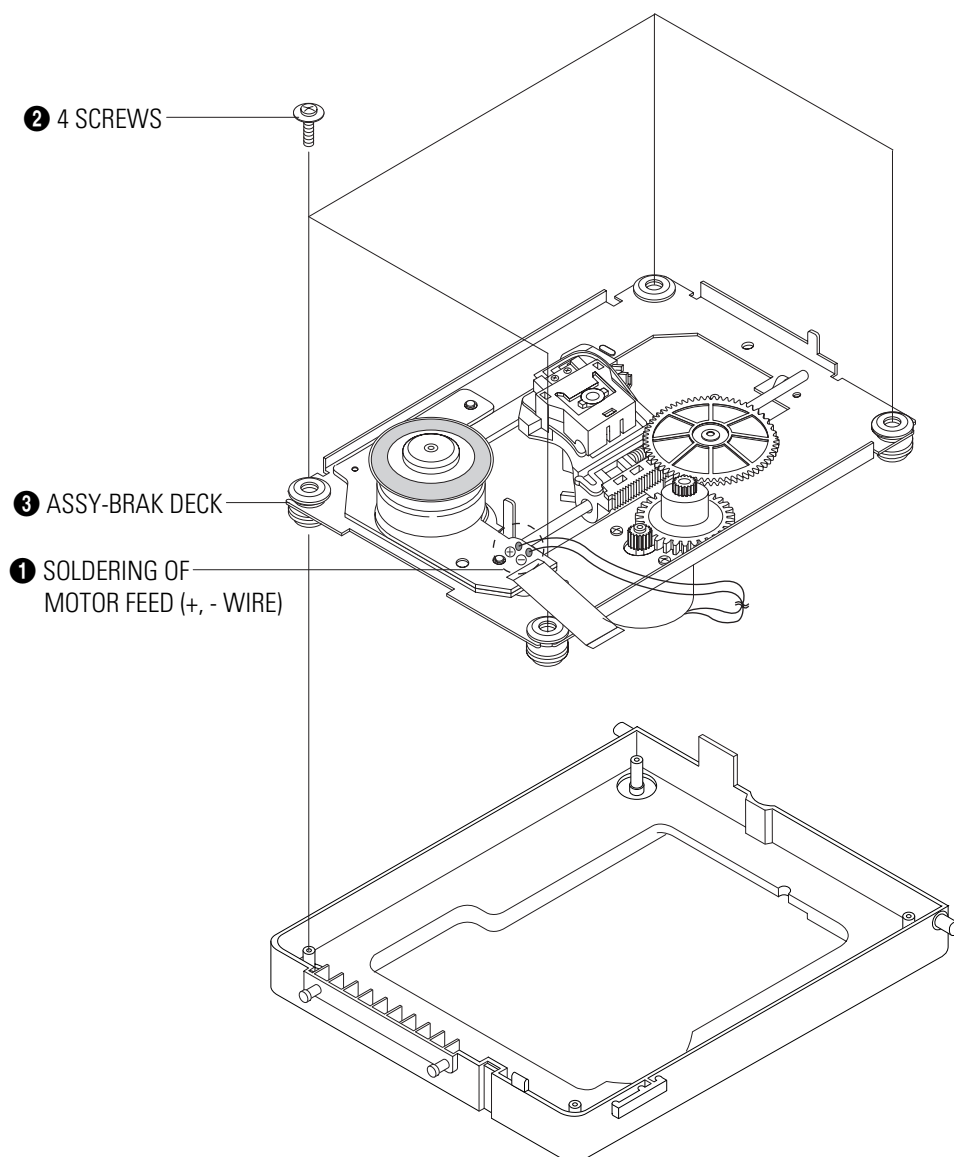


Fig. 3-11 Sub Chassis Removal

3-3-5 Ass'y Brkt Deck Removal

- 1) Remove Washer ❶.
- 2) Remove Gear Feed B ❷, Gear Feed A ❸.
- 3) Remove 2 Screws ❹.
- 4) Remove Shaft Pick-Up ❺ and Pick-Up Ass'y ❻.
- 5) Remove 1 Screw ❼.
- 6) Remove 2 Screws ❽.
- 7) Remove 3 Spring Spindle ❾ and Motor Spindle Ass'y ❿.

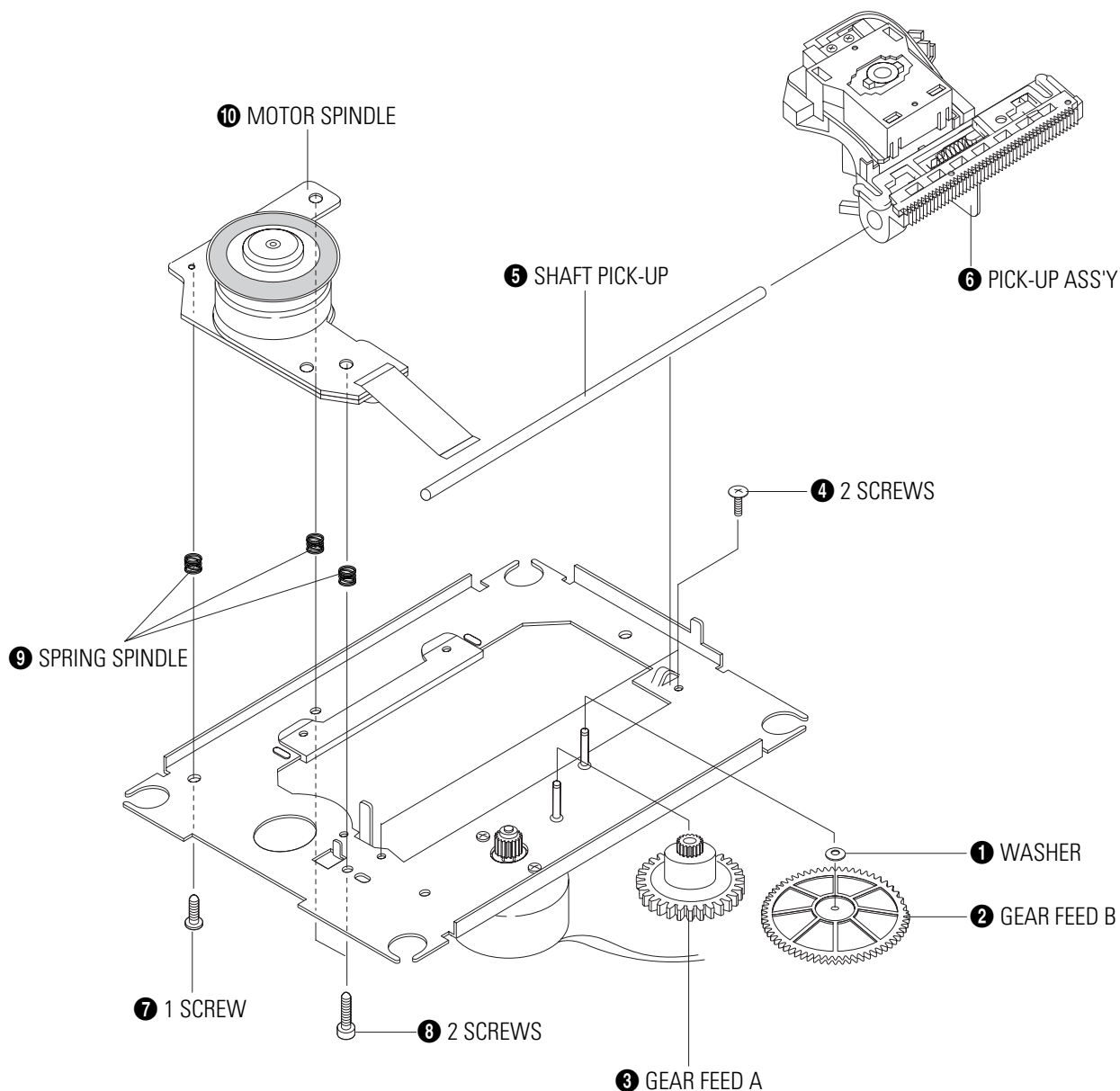


Fig. 3-12 Ass'y Brkt Deck Removal